

TOYOTA 86 (ZN6) TRD Additional Launch Parts

TRD newly develops parts below for 86.
Parts other than below are also under development. Please don't miss it.

86 TRD Additional parts list

	Description	Application	Parts No.	Qty	List Price (JPY)	Remarks	Release Timing	
1	Front Fender Aero Fin	All model	MS345-18001	1	50,000	Carbon fiber with TRD logo printed	End of Feb	
2	Steering Wheel & Interior Boot Set (for MT)	MT model	MS393-18002	1	56,000	<Component> Shift boot (made by MOMO, Real leather) Parking bracket boot (made by MOMO, Real leather) Shift ring (Material : Aluminum, Black color)	End of Feb	
	Steering Wheel (use with OE Airbag)	MT model	MS230-18001	(1)	48,000			Made by MOMO, Diameter 360mm
	Interior Boot Set (for MT)	MT model	MS393-18004	(1)	21,000			
	Steering Wheel & Interior Boot Set (for AT)	AT model	MS393-18003	1	56,000			
3	Full Bucket Seat	All model	-	-	132,500	Price shown for 1 set each	End of Feb	
	Full Bucket Seat	All model	MS330-18002	1 each	105,000	FIA approved, Full covered seat back		
	Seat Bracket	All model	MS331-18003	1 each	8,500	1 set necessary for 1 seat each		
	Seat Rail	All model	MS331-18001	1	24,000	Including Side airbag canceller		
4	Interior Panel Set	For driver side	All model	MS331-18001	1	24,000	Including Side airbag canceller	End of Feb
		For passenger side	All model	MS331-18002	1	24,000	Including Side airbag canceller	
5	Seat Belt Shoulder Pad Set	Black stitch	All model	MS010-00012	1	9,000	For genuine seat belt, Driver and Passenger side set	End of Jan
		Red stitch	All model	MS010-00013	1	9,000	For genuine seat belt, Driver and Passenger side set	
6	Clutch Cover *1	MT model	31210-ZN600	1	38,000	Genuine shape, suggested to use with 31250-ZN600 / 610	End of Jan	
7	Clutch Disc (Sports Fading) *1	MT model	31250-ZN600	1	30,000	Suggested to use with 31210-ZN600		
8	Clutch Disc (Metal Fading) *1	MT model	31250-ZN610	1	33,000	Suggested to use with 31210-ZN600		
-	Light Weight Flywheel *1	MT model	13451-ZN600	1	48,000	Weight 40% lighter than OE, moment of inertia: -40%	End of Feb	
9	Circuit Brake Kit	GT GT-Limited	MS220-18002	1	100,000	Front Left & Right rotor set, Front brake pad & rear brake pad set		
10	TRD Sportivo Suspension Set	All model	Under development	-	-	Ride height approx. 10mm lowering, OE shape, fixed damping type	End of Feb	
	Coil Spring Set *1	All model	Under development	1	-			
	Shock Absorber Set *1	All model	Under development	1	-			
11	Pillow-Ball Upper Mount Set (For TRD Coil over suspension) *2	All model	Under development	1	-	For front: Camber adjustable mechanism	End of Feb	
12	Coil Spring (For TRD Coil over suspension) *3	Front	All model	Under development	2	-		49.5 N/mm ID65 Length 185mm
			All model	Under development	2	-		62.0 N/mm ID65 Length 170mm
			All model	Under development	2	-		74.5 N/mm ID65 Length 170mm
		Rear	All model	Under development	2	-		72.0 N/mm ID65 Length 175mm
			All model	Under development	2	-		79.0 N/mm ID65 Length 170mm
			All model	Under development	2	-		86.5 N/mm ID65 Length 170mm
-	Engine Mount	RH	All model	Under development	1	-		OE shape, rised Rubber hardness
		LH	All model	Under development	1	-	OE shape, rised Rubber hardness	
		RR	MT model	12371-ZN600	1	15,000	OE shape, rised Rubber hardness	
-	Rear Differential Mount Cushion LH	All model	41651-ZN600	1	10,000	OE shape, rised Rubber hardness	Unfixed	
-	Rear Differential Mount Cushion RH	All model	41651-ZN610	1	10,000	OE shape, rised Rubber hardness		
13	(6) Front Upper Support	All model	48609-ZN600	2	4,500	OE shape, rised Rubber hardness	End of Jan	
	(7) Lower Arm Bush No.1	All model	48654-ZN600	2	4,000	OE shape, rised Rubber hardness		
	(8) Lower Arm Bush No.2	All model	48655-ZN600	2	3,800	OE shape, rised Rubber hardness		
	(9) Rear Lateral Control Rod Bush	All model	48747-ZN600	2	4,500	OE shape, rised Rubber hardness		
	(10) Rear Upper Arm Bush No.1	All model	48725-ZN600	2	4,200	OE shape, rised Rubber hardness		
	(11) Rear Suspension Arm Bush No.1	All model	48725-ZN620	4	4,500	OE shape, rised Rubber hardness		
	(12) Rear Suspension Arm Bush No.2	All model	48725-ZN630	2	4,500	OE shape, rised Rubber hardness		
	(13) Rear Stabilizer Link Bush	All model	48849-ZN600	2	4,100	OE shape, rised Rubber hardness		
	(14) Rear Suspension Member Bush	All model	52271-ZN600	4	5,000	OE shape, rised Rubber hardness		
	(15) Steering Rack Housing Bush No.1	All model	45516-ZN600	2	4,000	OE shape, rised Rubber hardness		
	14	Lateral Link Set	All model	48700-ZN610	1	50,000		OE shape, rised Rubber hardness
15	Battery Clamp	Except Cold district spec	MS326-18001	1	9,000	For battery fixing, Carbon fiber shaft		

*1: Toyota genuine repair parts is necessary when installation.

*2: Need to install Shock Absorber Set (MS260-18001) and Coil Spring (under development) simultaneously.

*3: Need to install Shock Absorber Set (MS260-18001) and Pillow-Ball Upper Mount Set (under development) simultaneously.

Product Image



1. Front Fender Aero Fin



2. Steering wheel & Interior Boot Set (Photo is for AT model)



3. Full Bucket Seat



4. Interior Panel Set



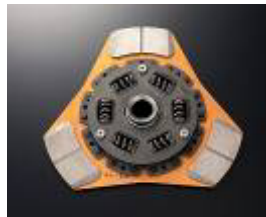
5. Seat Belt Shoulder Pad Set



6. Clutch Cover



7. Clutch Disc (Sports Facing)



8. Clutch Disc (Metal Facing)



9. Circuit Brake Kit



10. TRD Sportivo Suspension Set



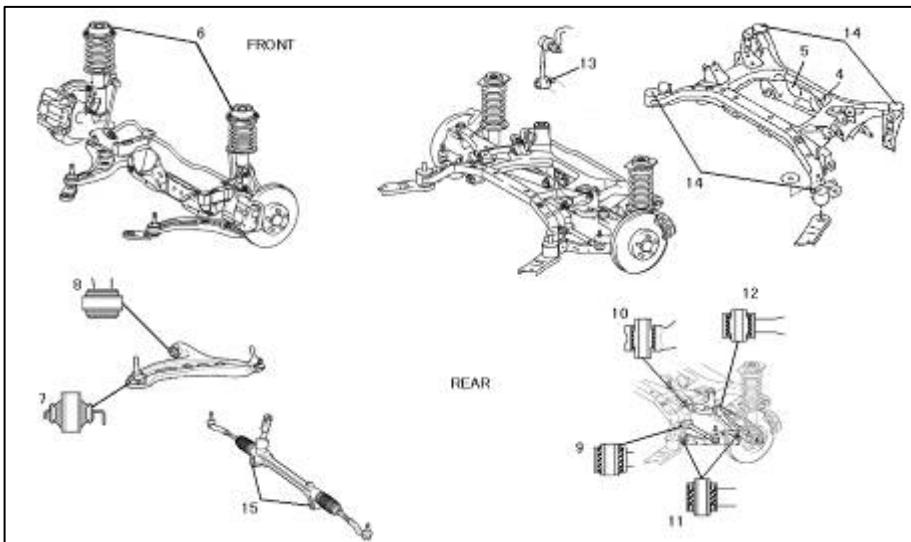
11. Pillo-ball Upper Mount Set



12. Coil Spring



14. Lateral Link Set



13. Suspension Bushing Set

* Above photo, price, release timing shows the product under development. Please note that it may be changed without prior notice.

For further information, please contact,

TOYOTA TECHNOCRAFT TRD
 TEL +81-45-540-2125 FAX: +81-45-540-2122
 TRD Parts catalog site: <http://www.trdparts.jp/english/>